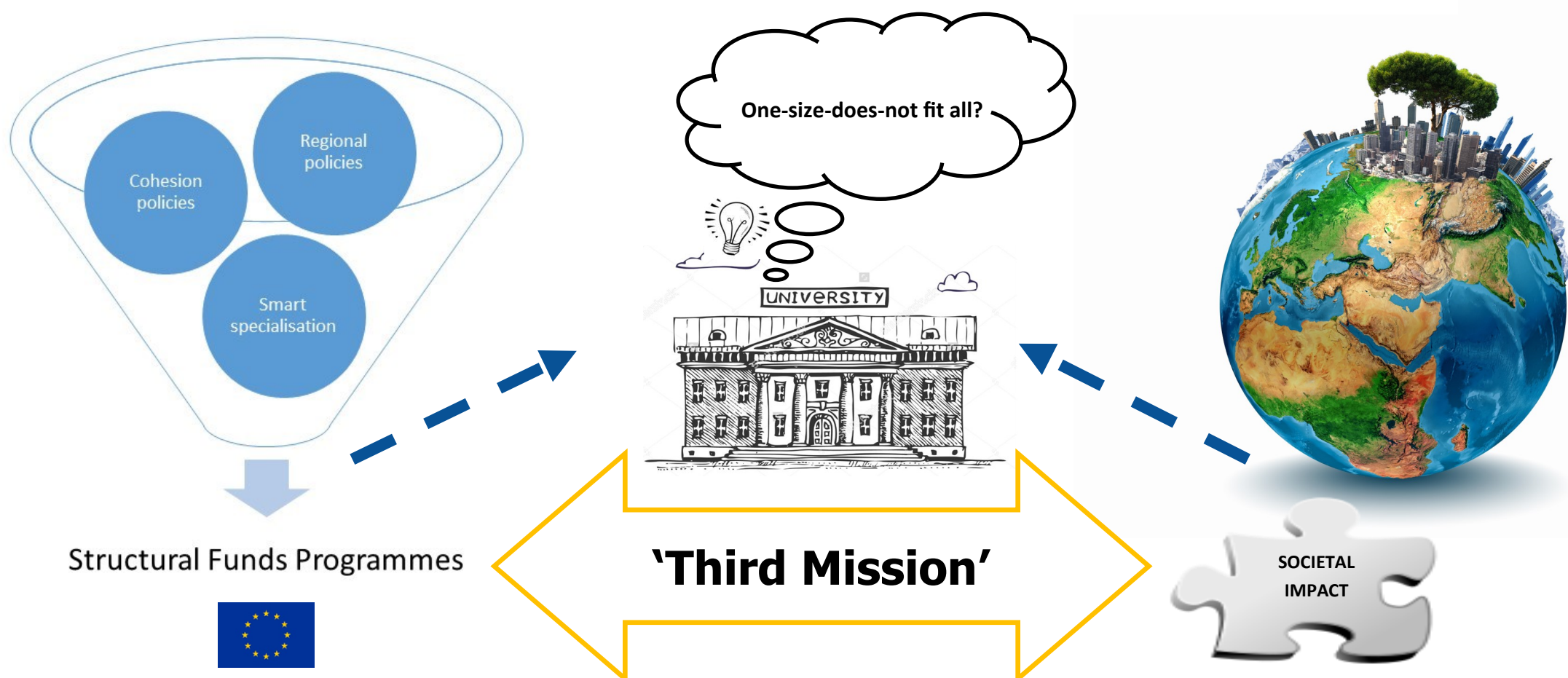


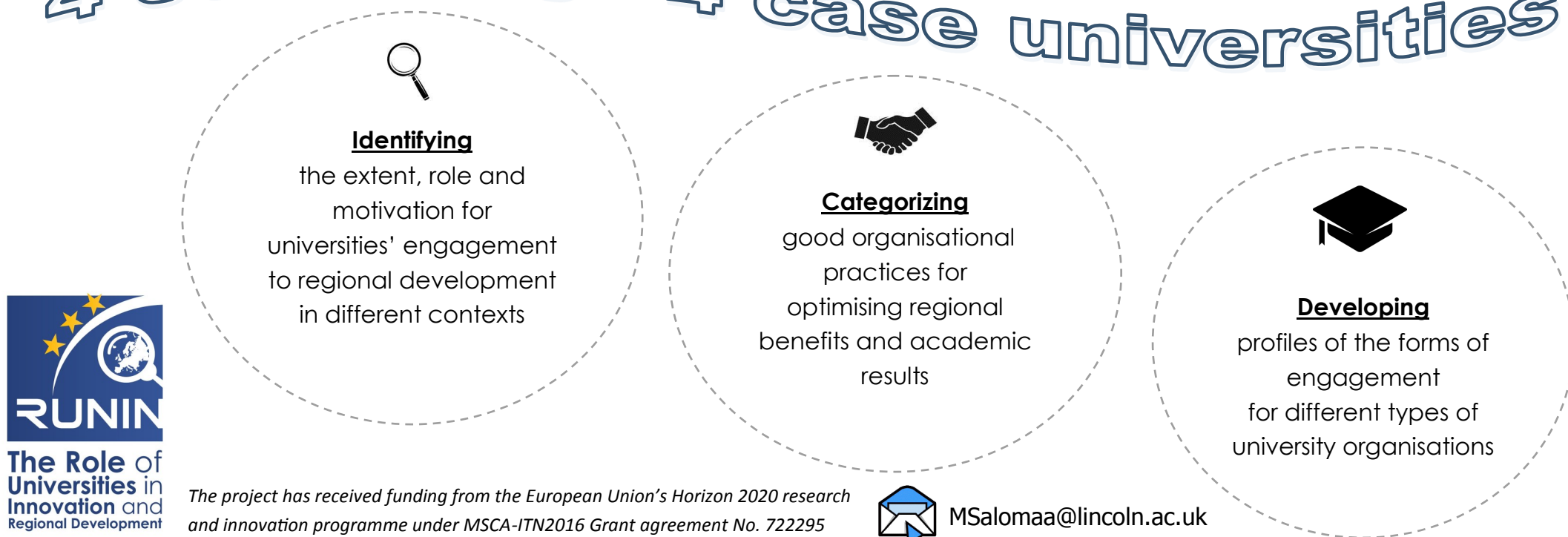
Universities as actors in regional development – Roles, profiles and partnerships in Structural Funds programmes

How entrepreneurial universities contribute to regional development through Structural Funds?



- **AIM** is to identify the level of engagement, good practices and outcomes from university-led Structural Funds projects for optimisation of both regional benefits and academic results.
- **THEORETIC BACKGROUND** Conceptual framework based on "Entrepreneurial University" literature (e.g. Clark, 1998; 2004, Vorley & Nelles 2009; 2012, Etzkowitz, 2013) and previous studies on universities and SF programmes (e.g. Muizniece, L. & Peiseniece, L., 2012).
- **DATA** semi-structured interviews with academics and other staff members engaged with SF projects, top management of universities and regional authorities granting the funding; secondary data set consisting of policy documents, funded project data bases, strategy documents and websites.

4 countries - 4 case universities



Mrs. Maria Salomaa, Early Stage Researcher
Lincoln International Business School
University of Lincoln.



UNIVERSITY OF
LINCOLN